



KOLEKSIYON

WORKING IN A NEW WORLD

Superposing spatial formations

#MomentsofLife



We redesign workspaces to accommodate the evolving daily customs and practices in a new era.

Superposing spatial formations

Re-mapping the work habitat with superposed spatial formations.



Following the global seismic effects of the pandemic trauma, the coming era will define altering ways of working that will be the harbinger of a new work culture.

Having this in mind, can we re-map the work habitat with novel questions, such as where the ambiguity can lead us? How can we create social spaces to collaborate and concentrate in a new organizational format? What defines a work habitat as the new work styles are boundless? What unique qualities do we need to seek in the new work habitat?

We suggest rethinking the modernistic definition of spaces with their mono-functional references. Still, we try to find the hidden connections between different spatial functions, such as living, learning, healing, social, and workspaces. As much as such spaces differ, they also have critical commonalities. How can we seek similar differences and different similarities between these seemingly unrelated spaces and create a new mapping approach in an entangled perception where they are seen superposed?

Following such a brief, we can address some solutions that address multi-use scenarios that overlap, which may seem irrelevant in the first instance. Suppose we reject following the briefs of the existing patterns to come up with answers as designs for the workplace, hospitality, health centers, schools, or even homes. Instead, we can address people's daily routines or behavioral patterns in different occasions or scenarios and find answers to support them in every other condition or space.

The critical advantage of prioritizing the scenario-based brief to a product or place-based one is that it can also be fluid and adapt to constant changes. This is the essential mark of our century, as Baumann has beautifully described in one of his works, *Liquid Modernity*.

In this booklet, we also wish to combine many choices around a scenario-based critique of multiple spaces that easily overlap. This is the sole reason we will not name it the office or workplace, but we are more inclined to call it a space where we all perform. If we accept the delicate metaphor 'All the world is a stage ...', we can easily name all the spaces designated with alternative functions as a giant space, not concentrating on the name and operation of this space. Still, more so on the inhabitants of it, that is us, the actresses and the actors.

Koray Malhan
Koleksiyon

Ideas & inspirations

Two main guidelines to follow: respect and common sense.



We must think of spaces in a more sustainable way, more comfortable. We must offer places adapted to each moment of work, creativity and life, while optimizing interactions (networking, exchanges, etc.), thanks to an intelligent circulation network.

Create flexible, evolving spaces that can be modulated very quickly while maintaining the quality; in particular thanks to office furniture that can be adapted to new ways of working (flexibility, modularity, connectivity, functionality), as the ANATOLE collection allows so well.

The way work is organized is changing, it's being redesigned. Workplaces will no longer be standard - each activity will have a specific place to work. Tomorrow's open spaces must be able to be divided and opened up easily and quickly. The open space has evolved a lot in the last few years, especially since the sanitary crisis.

It is now the office quality of life that will justify leaving home.

Much more than a production site, the office building is gradually becoming a real place to live and meet, and a real urban component.

Jean-Michel Wilmotte



Design is free by definition.

If applied to the transformations of the world of work in recent years, it must also be able to respond to the changing needs, to the current dynamics of change that are being reflected in society.

The liquid society (fluid), that is the one we are encountering, asks new spaces to be able to adapt over time, through the furnishings and objects contained therein; it breaks down the walls of defined spaces and functions, it asks objects to be able to adapt to different uses.

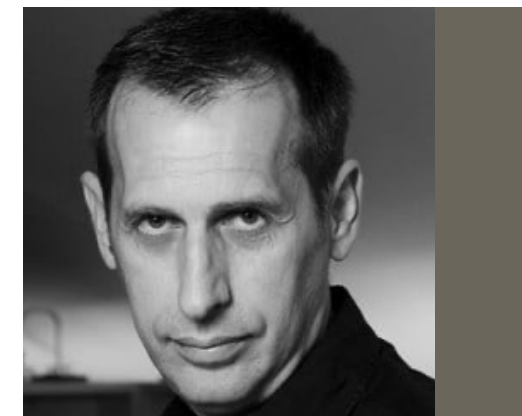
Quite simply “The home is also the new office and the office the new home”.

It is therefore requested that the new furnishings be able to offer aesthetics, functionality, technology and at the same time transmit warmth, comfort and serenity.

For us, the identity of an object remains in design, understood as the conception of aesthetically valid forms in relation to functionality, because within these changes it must succeed in its integrity to rise to a point of reference in space, be recognized in its essence because more than ever free and independent from the rest.

Studio Kairos

The problem is: what kind of workspace for the future.



I changed my studio few months ago and it was the opportunity to re-think the issue of “changing workspaces” and how will be the offices of the future.

As an architect and a designer, I’m not really interested in technology, equipment, organization, time, etc., but the theme that is very important for me is: what kind of space for our offices, in the sense of architecture, interior and furniture design.

After the worldwide lockdown, where we discovered the new frontiers of technology and that we can work, manage, control, produce and follow up our projects even online, from home, without going to our offices. We understood also that we want to go back to work in our offices, go out, have meetings with colleagues, make plans together.

I think that we really want to work together in our offices, not at home.

The problem is: what kind of workspace for the future.

In this period there has been a lot of discussions about the theme “home office”, about how we can redesign our apartments to have more space and more equipment to be able to work from home. I think that the real big challenge for us is not to redesign our home as an office but how we can design our office more like a home, in the sense of conceiving workspaces with the quality and the beauty of a contemporary home; offices with a strong domestic character, with good interior design, good spaces, materials, colours, good furnishings and good light. Workspaces inside oh good architectures in good cities, offices with good layout and spaces where we are happy to stay and to work.

This is the idea and the thought that I had in mind when I designed my new architectural and design studio in Milan.

Gabriele Buratti
Buratti Architetti



Exploring new boundaries in contemporary design.

Founded by renowned architect Faruk Malhan in 1972, Koleksiyon seamlessly blends the timelessness of tradition with the forward-thinking vision of innovation to shape the future of design. With a relentless pursuit of excellence in materials, forms, colors and production technologies, Koleksiyon constantly pushes the boundaries of contemporary design.

Koleksiyon’s unwavering commitment to “industry serving design” has not only been realized, but has also propelled the brand to international acclaim, earning the respect and admiration of millions of people across 5 continents. This is achieved through its unique design language, unmatched product quality and an unwavering focus on creating solutions that are tailored to the needs of people.



We envision our business as a circular system.

Koleksiyon operates with a circular mindset, prioritizing transformation and reuse over the traditional linear model of production, use, and destruction. We are committed to preserving resources, protecting the environment, and reducing waste and energy consumption throughout our entire value chain.

Our designs are not only aesthetically pleasing but also built to last, with a strong emphasis on respect for nature and the ability to be reused. We employ eco-friendly business practices in production, minimize waste and actively work to reduce our carbon footprint. We also make use of recycled and/or recyclable materials, as we are dedicated to preserving global resources for future generations.



We design circular



We produce circular



We use circular

Moments of life

Koleksiyon produces furniture, tableware, textile products and accessories that positively affect people at every moment of the day and add happiness, color and beauty to life.

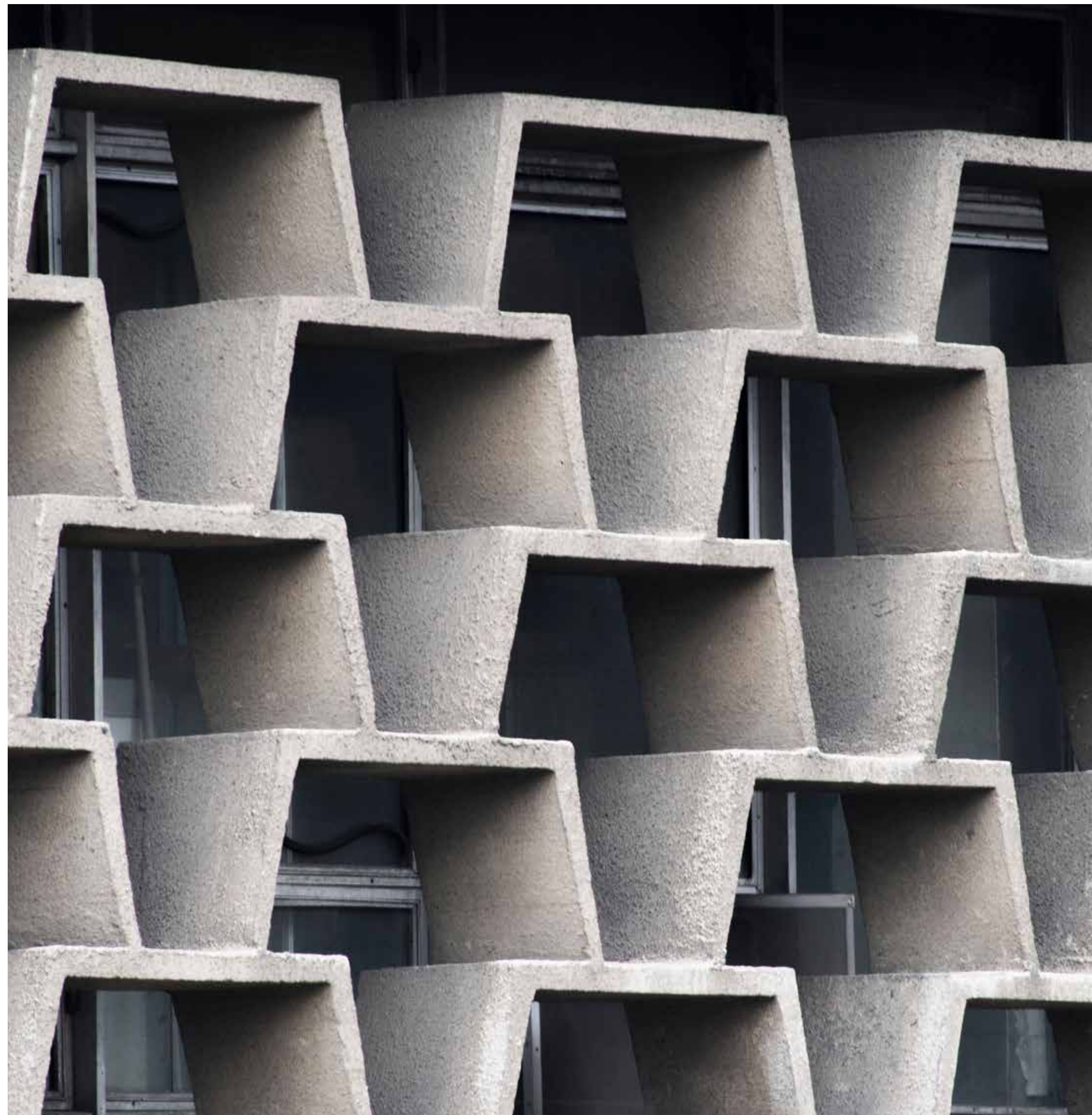
The new way to work in a transforming world

With its innovative approaches to every moment of life, Koleksiyon reinterprets workspaces with a contemporary design language.



Brave new world

The business life and working habits, which change at a dizzying pace, are changing both the daily life of the people and the workplace.





Lines that integrate with architecture

The changing look of the office is
shaped by new working rituals.



Liliana seating set, Faruk Malhan
Suri pouf, Sezgin Aksu & Silvia Suardi



A new approach to living office spaces.



Koleksiyon seeks perfection at every point with its attention to detail.



Stair Chair chair, Studio Kairos
Threshold shelving system, Faruk Malhan & Koray Malhan



Inspired by contemporary building materials and design trends.



Dilim sofa, Jan Wertel & Gernot Oberfell
Plato bookcase, Koleksiyon Design House
Piri Reis University İstanbul, Kreatif Architects



A new bold look to innovative working environments.



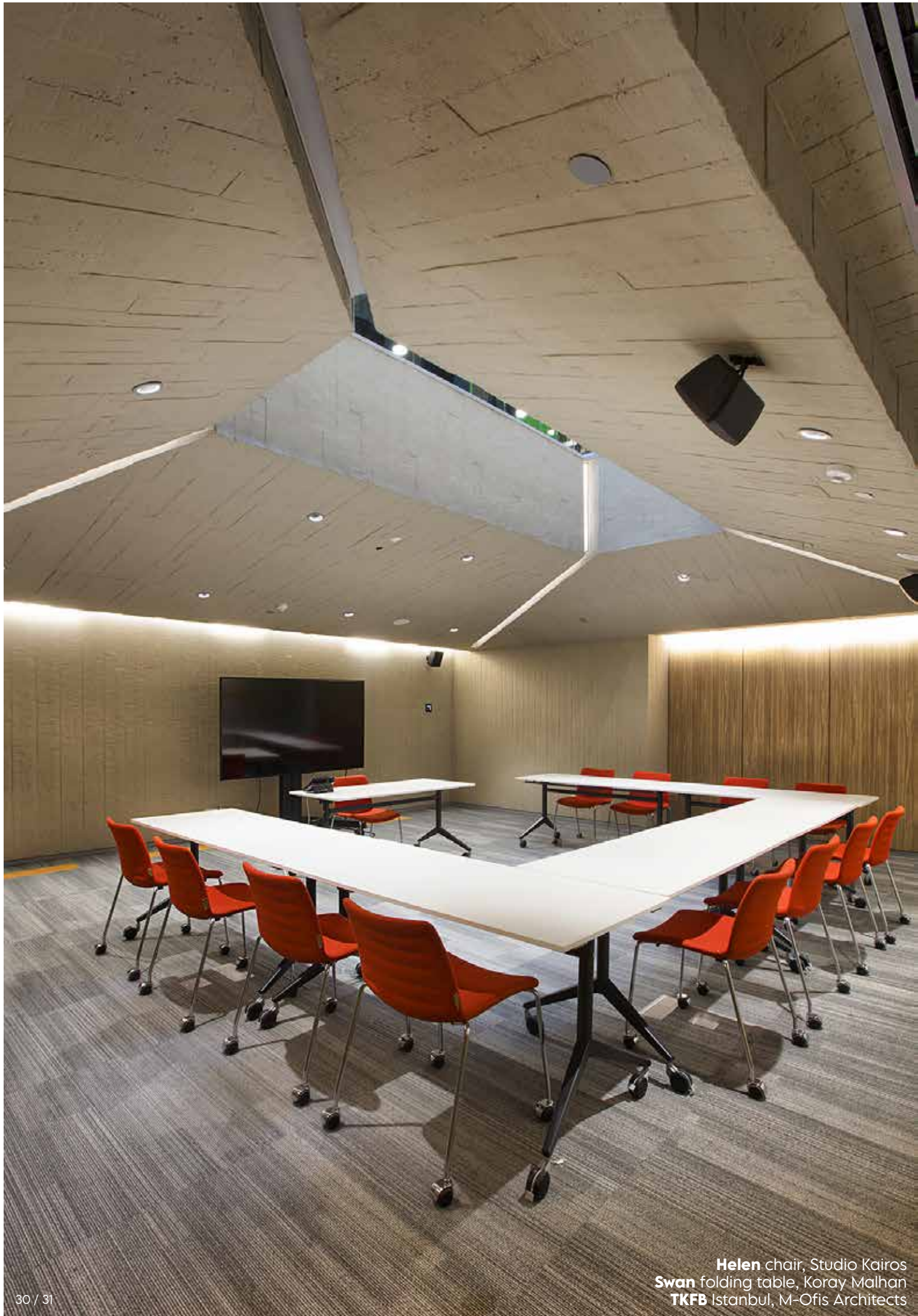
Design for life

Contemporary designs that bring workspaces to life.



Constant pursuit of excellence

Since the day it was founded, Koleksiyon aims for excellence in quality with advanced production technologies, explores new boundaries in contemporary design, and continues its search for new materials, forms and colors.

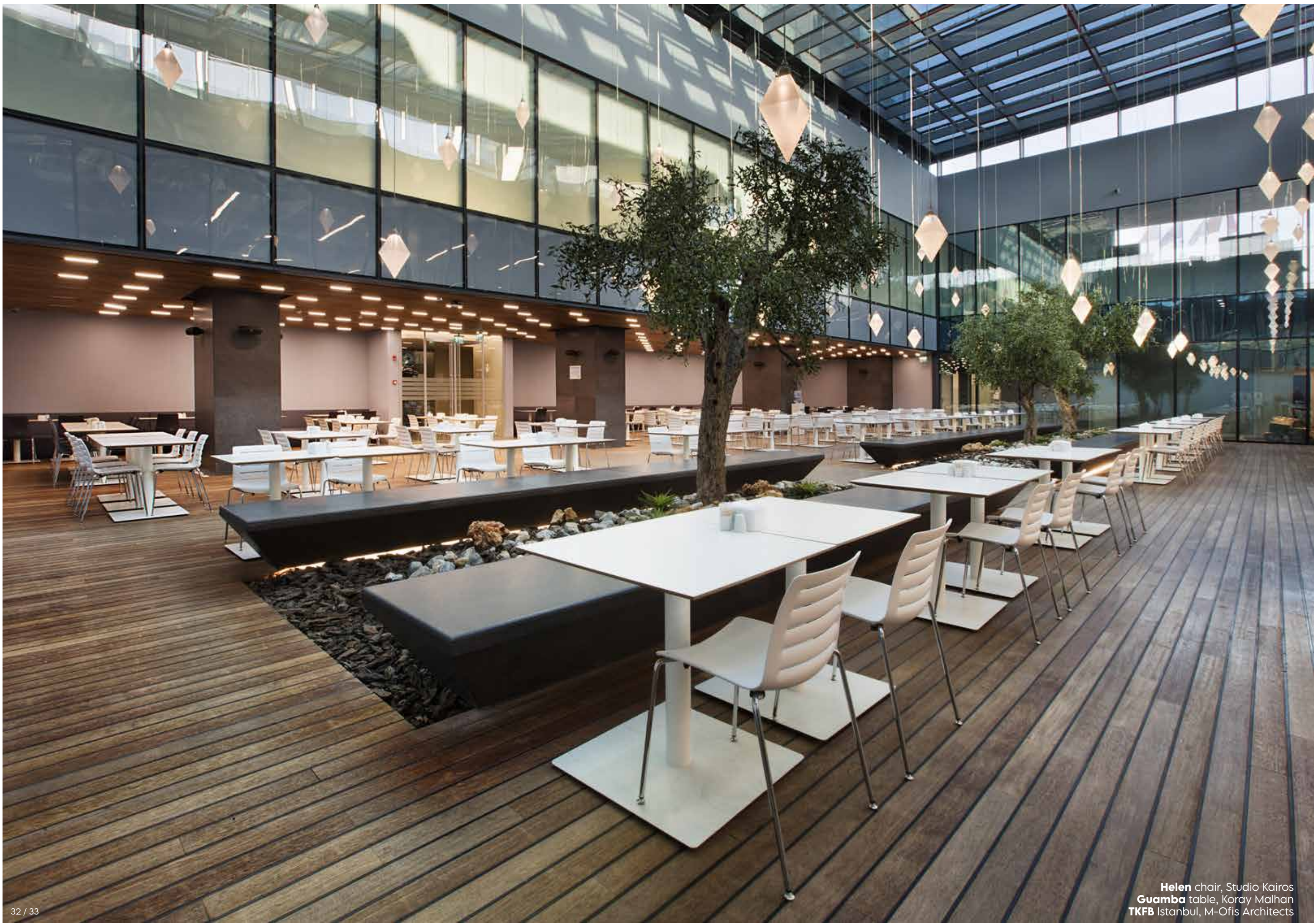


Helen chair, Studio Kairos
Swan folding table, Koray Malhan
TKFB Istanbul, M-Ofis Architects



A broader look from a new perspective.

Helen high chair, Studio Kairos
Partita high table, Faruk Malhan





Living and working spaces
 blended in an integrated design.



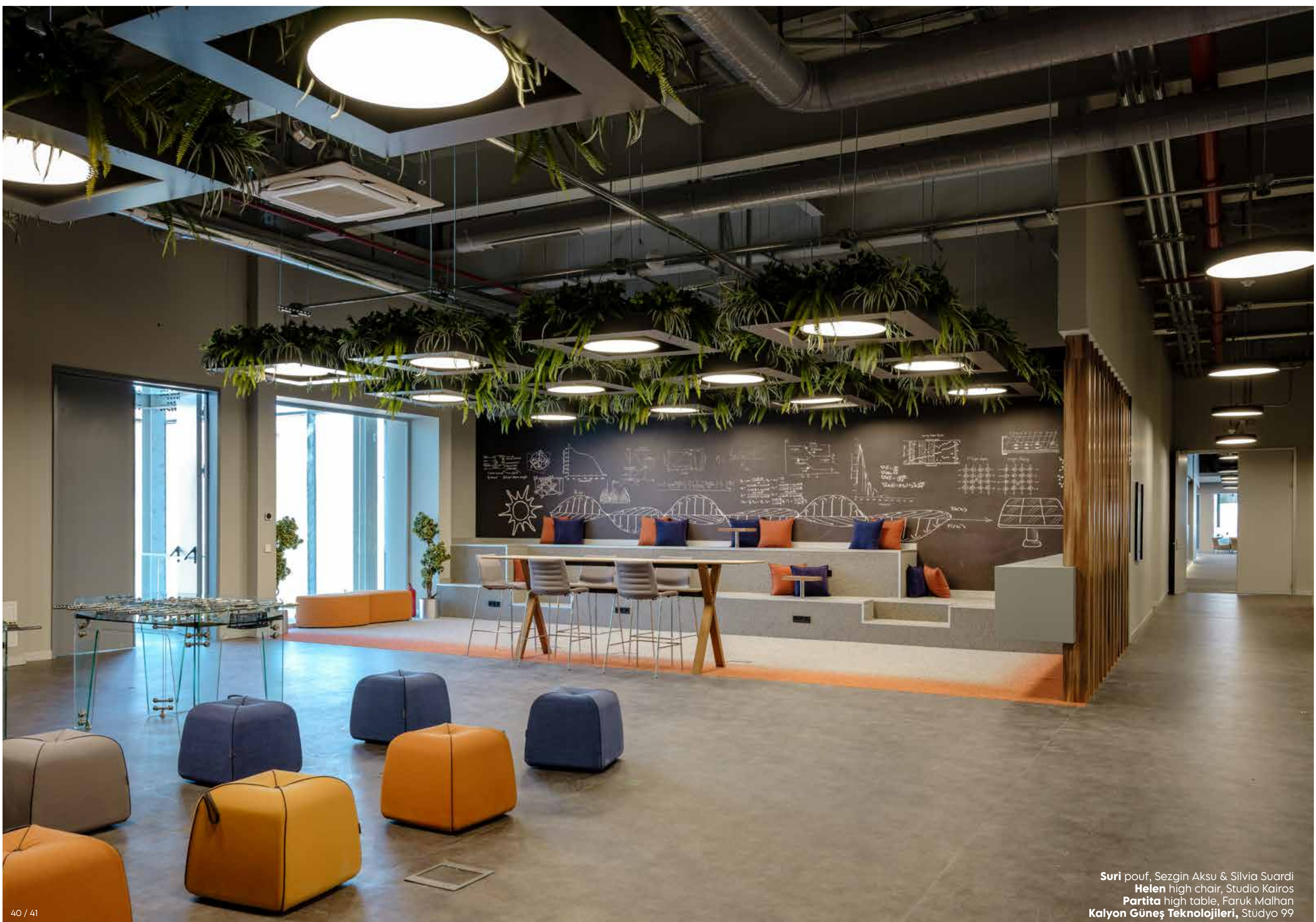
Letting the outdoors in.



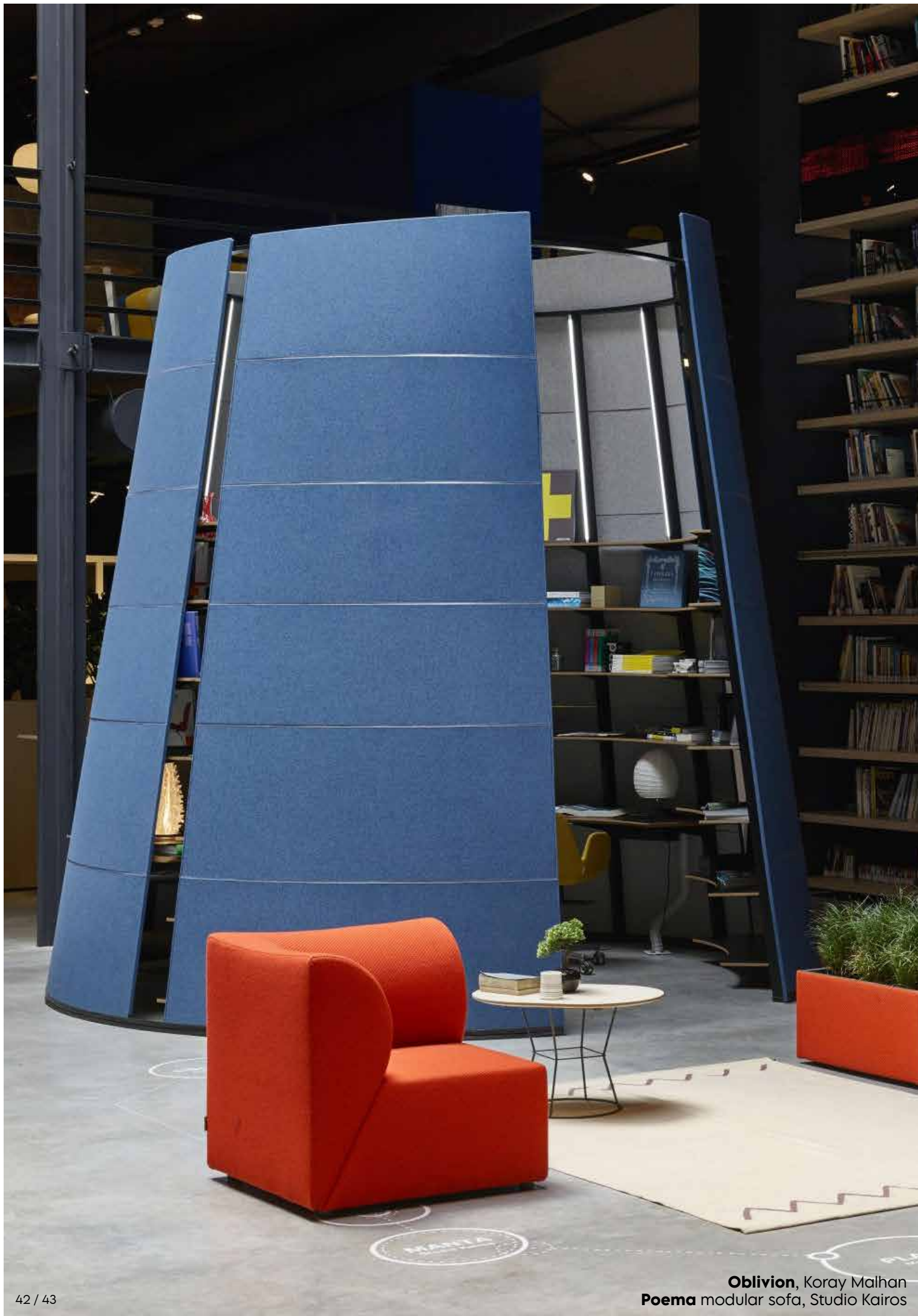
Calvino desk, Studio Kairos
Tola chair, f/p design



Change is accelerating exponentially and
offices are one of the most affected areas.



Suri pouf, Sezgin Aksu & Silvia Suardi
Helen high chair, Studio Kairos
Partita high table, Faruk Malhan
Kalyon Güneş Teknolojileri, Stüdyo 99

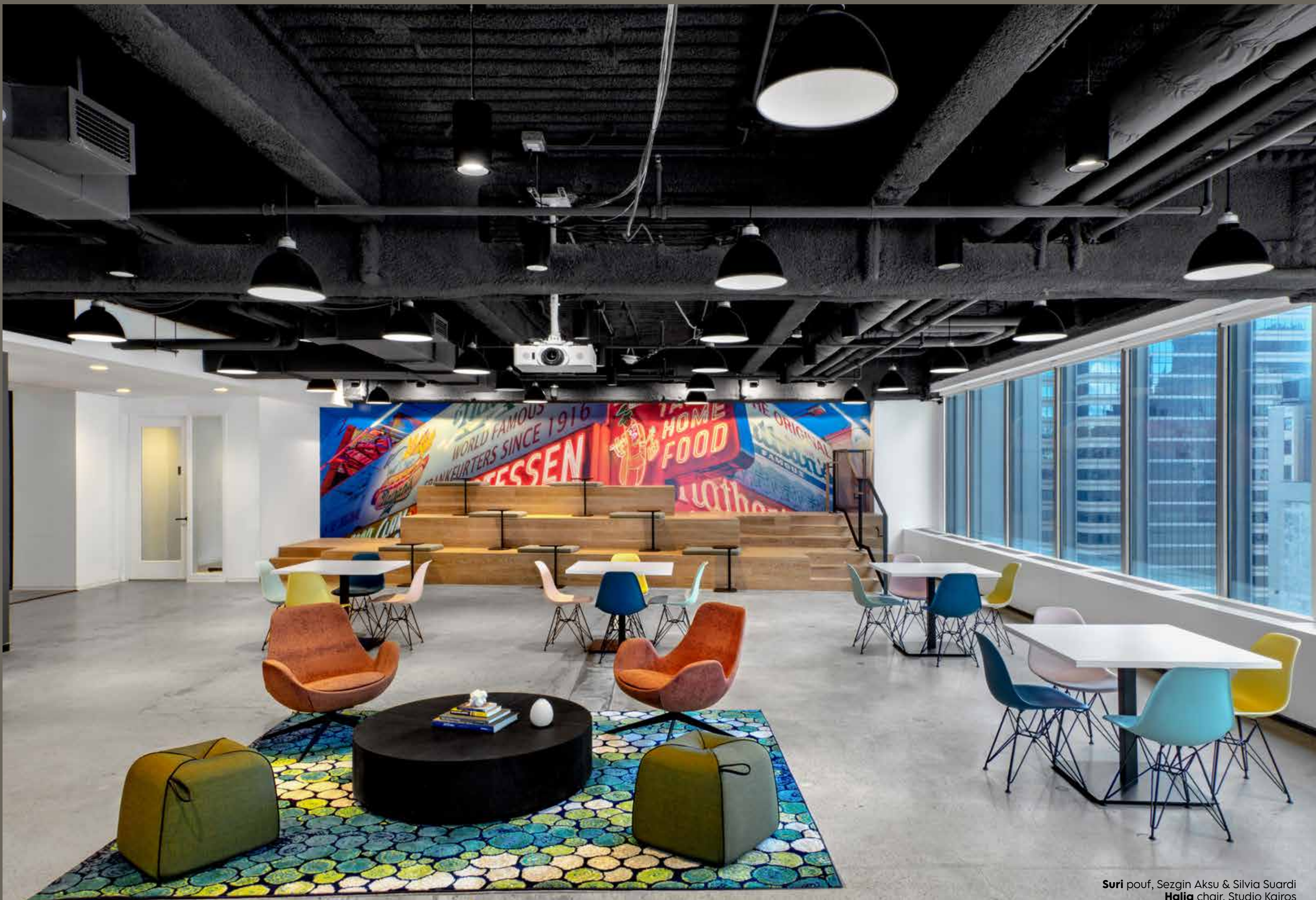


Oblivion, Koray Malhan
Poema modular sofa, Studio Kairos



Offices are being renewed with
an unprecedented variety of designs.

Anatole Flex Wall, Jean-Michel Wilmotte



Suri pouf, Sezgin Aksu & Silvia Suardi
Halia chair, Studio Kairos
booking.com California, TPG Architecture

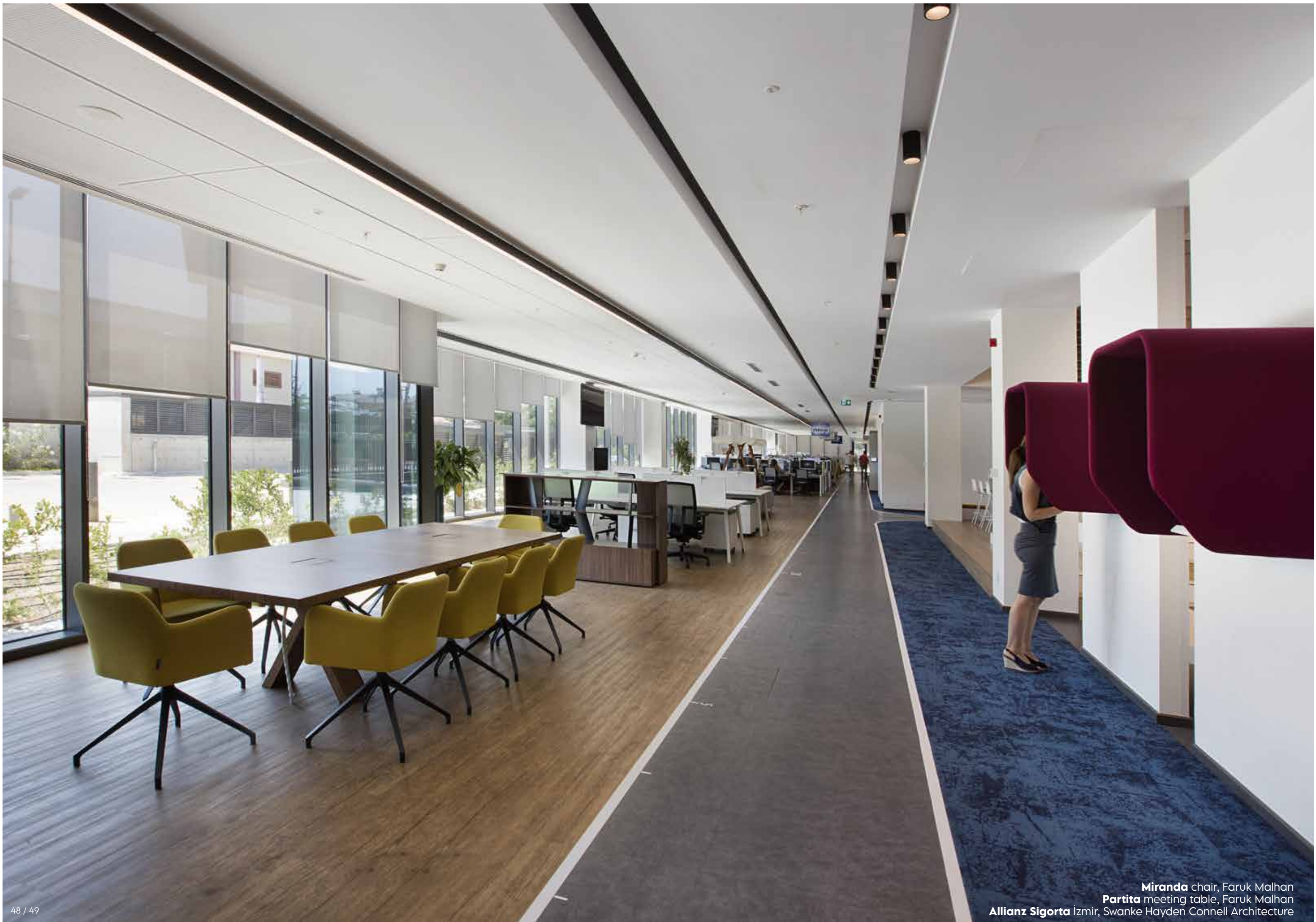


Dilim chair, Jan Wertel & Gernot Oberfell
Suri pouf, Sezgin Aksu & Silvia Suardi
Miranda chair, Faruk Malhan
Partita meeting table, Faruk Malhan
TBWA Istanbul, Erginoğlu & Çalışlar Architects



Redefining the boundaries of modern workspaces.

Dilim sofa, Jan Wertel & Gernot Oberfell
ikaros sofa, Koray Malhan
360 Office Istanbul, OA+Design Studio



A new approach to seating in the new workplace

Anatole chair and stool family is a unique proposition as a counteroffer to the ultra ergonomic machines, designed for the workplace where people are supposed to sit 8 or more hours on a single chair and desk position for a day long. Many evidence suggests that this situation does not represent the future of work habitats, and its inhabitant's habits.





Line sofa, Tristan Lohner
Line coffee table, Tristan Lohner



Koleksiyon team of designers and craftsmen work together to bring innovative furniture designs to life.



Dedicated to provide the best possible furniture solutions for the changing office landscape.



Strive to stay ahead of the curve in terms of design and functionality.



Committed to creating furniture that enhances productivity and promotes a comfortable working environment.

Halia chair, Studio Kairos
Calvino desk, Studio Kairos
Mudita bookcase, Faruk Malhan & Koray Malhan
Solis pouf, Studio Kairos



ikaros sofa, Koray Malhan
Suri pouf, Sezgin Aksu & Silvia Suardi
sahibinden.com Istanbul, Erginoğlu & Çalışlar Architects



Colors that bring life to the office

Bright and bold colors to bring life to once formal workspaces.



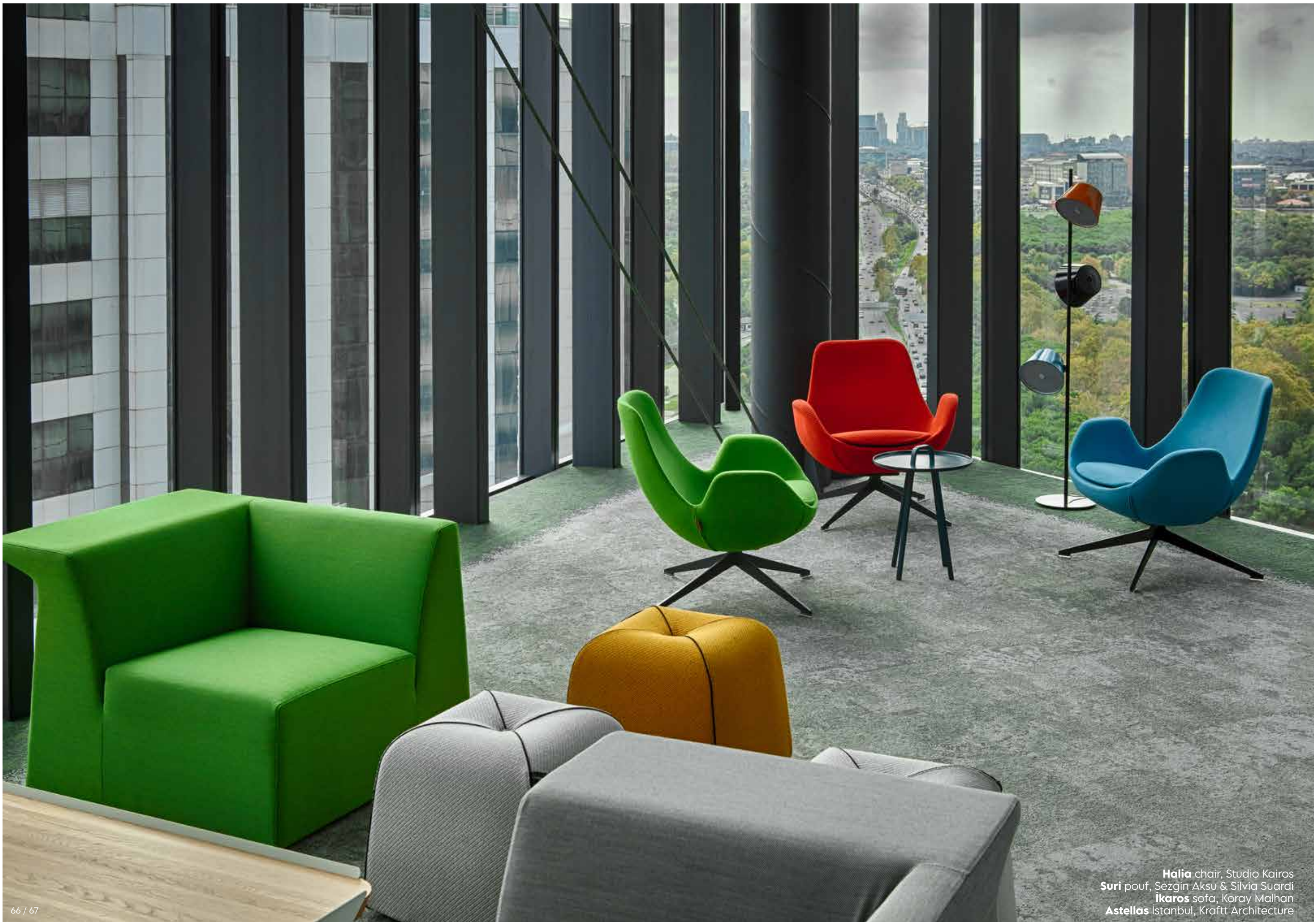
Halia chair, Studio Kairos
Astellas İstanbul, Kraft Architecture



The color choices in an office can have a significant impact on the mood and productivity of the people.



İkaros sofa, Koray Malhan
Suri pouf, Sezgin Aksu & Silvia Suardi
Miranda chair, Faruk Malhan
Narcissus coffee table, Koray Malhan
Workinton - AND İstanbul, Motto Tpu



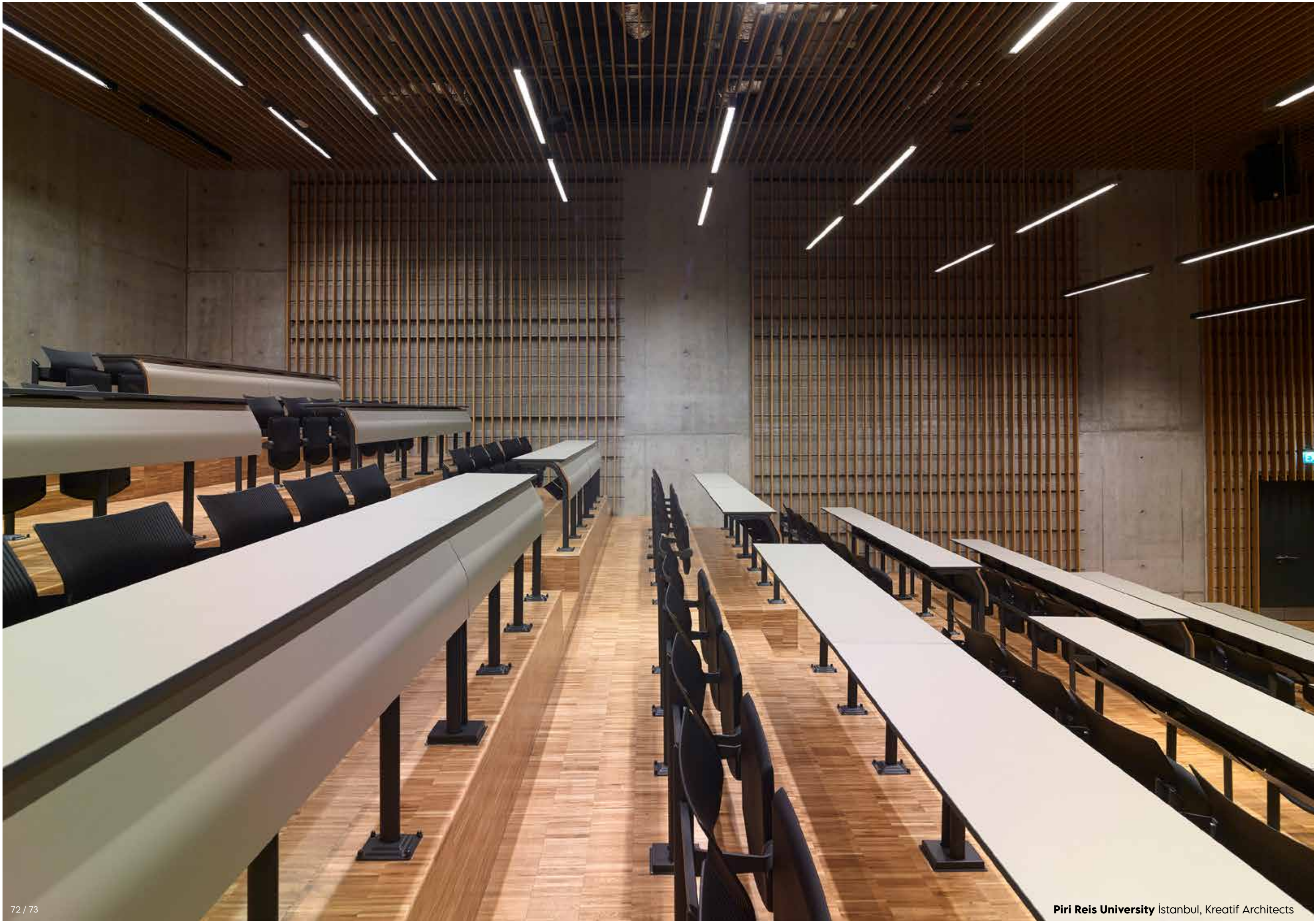
Halia chair, Studio Kairos
Suri pouf, Sezgin Aksu & Silvia Suardi
ikaros sofa, Koray Malhan
Astellas İstanbul, Kraftt Architecture





Solutions specific to the place of use

Tailor made solutions designed specifically
to the place and purpose of use.









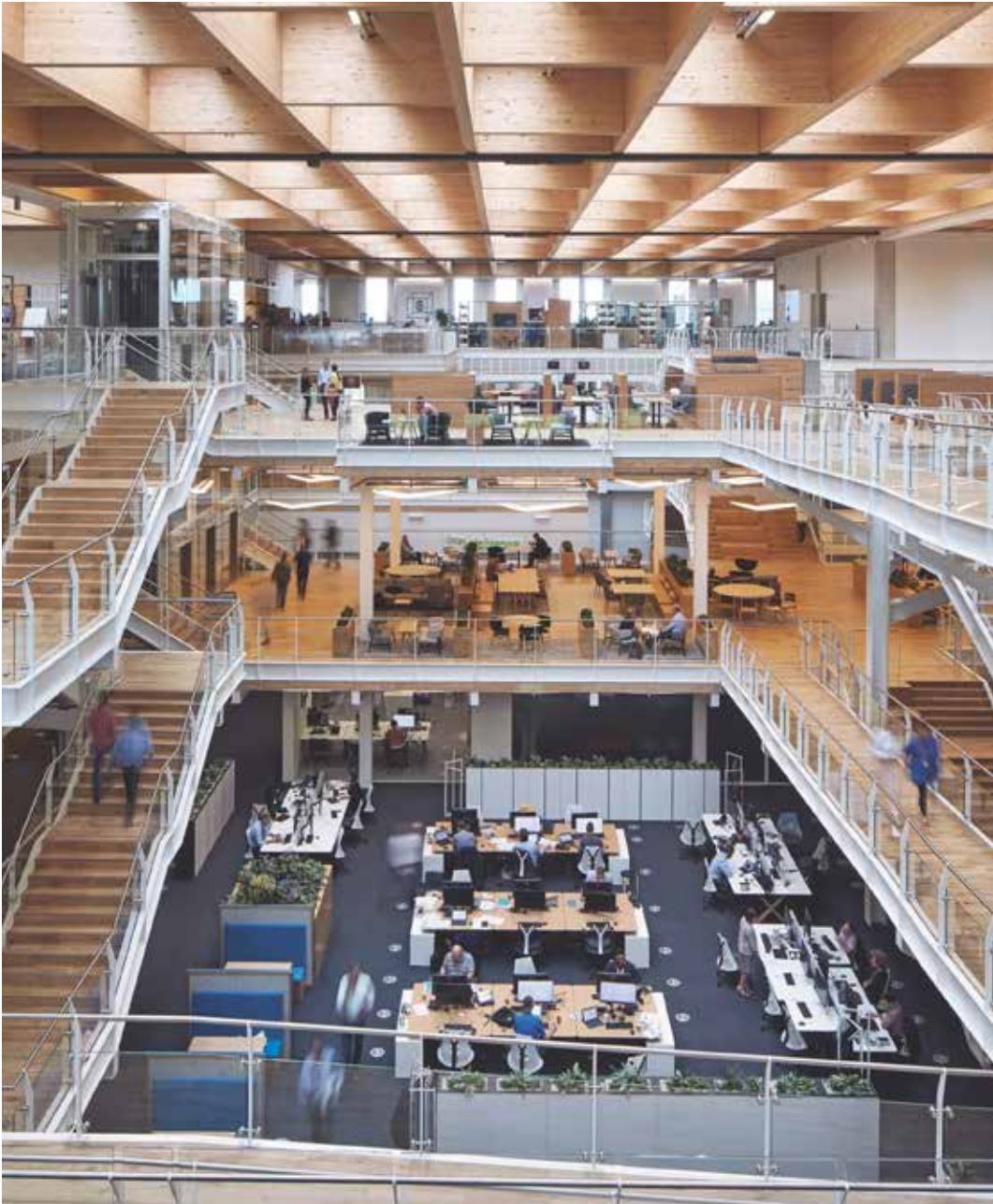


Simplissimo chair, Jean Nouvel Design
Simplissimo ottoman, Jean Nouvel Design



The Jean Nouvel Design chair collection features a distinctive, cutting-edge design that makes it a cool and stylish addition to any interior setting.

Vienna chair, Jean Nouvel Design
Vienna sofa, Jean Nouvel Design



Koleksiyon not only expertly crafts exceptional and high-quality products, but also meticulously creates comprehensive and customized solutions that seamlessly integrate with the unique characteristics and requirements of both the intended place of use and architectural space.



Dilim sofa, Jan Wertel & Gernot Oberfell
Narcissus coffee table, Koray Malhan
Elisabeth-Kirche Germany




Designs that effectively cater to the diverse and dynamic needs and wants of individuals, across various moments and moods of the human experience.

Roma sofa, Buratti Architetti



Oscar sofa, Studio Kairos
Gusto California, Gensler



Striving for excellence from the
overall design to the smallest detail



Yellow is a vibrant and energizing color that can bring a sense of cheerfulness and inspiration to workspaces.

Specially designed for meeting rooms and waiting areas

With its exquisite form, Miranda supports the sitter's back and conforms to its shape.

Miranda's four different leg options make it versatile in its use. With its comfort and elegance, Miranda is undoubtedly an ideal choice for workspaces.





Light and elegant in unique form and vibrant spirit.



96 / 97 **Alpsee** chair, Andreas Krob



Sleek, modern, and geometric Pi table.

Pi high table, Tristan Lohner







Innovative, bold, and contemporary
Halia chair collection.

Dedicated to creating exceptional designs

Founded by renowned architect Faruk Malhan in 1972, Koleksiyon seamlessly blends the timelessness of tradition with the forward-thinking vision of innovation to shape the future of design. The company confidently pioneers new ideas, while drawing strength from its heritage and continues its journey towards a better world.



Halia chair, Studio Kairos
Halia ottoman, Studio Kairos



A fresh look to office decoration.

Forms and materials inspired by nature

Since the day it was founded, Koleksiyon aims for excellence in quality with advanced production technologies, explores new boundaries in contemporary design, and continues its search for new materials, forms and colors.





Exceptional attention to detail and craftsmanship.







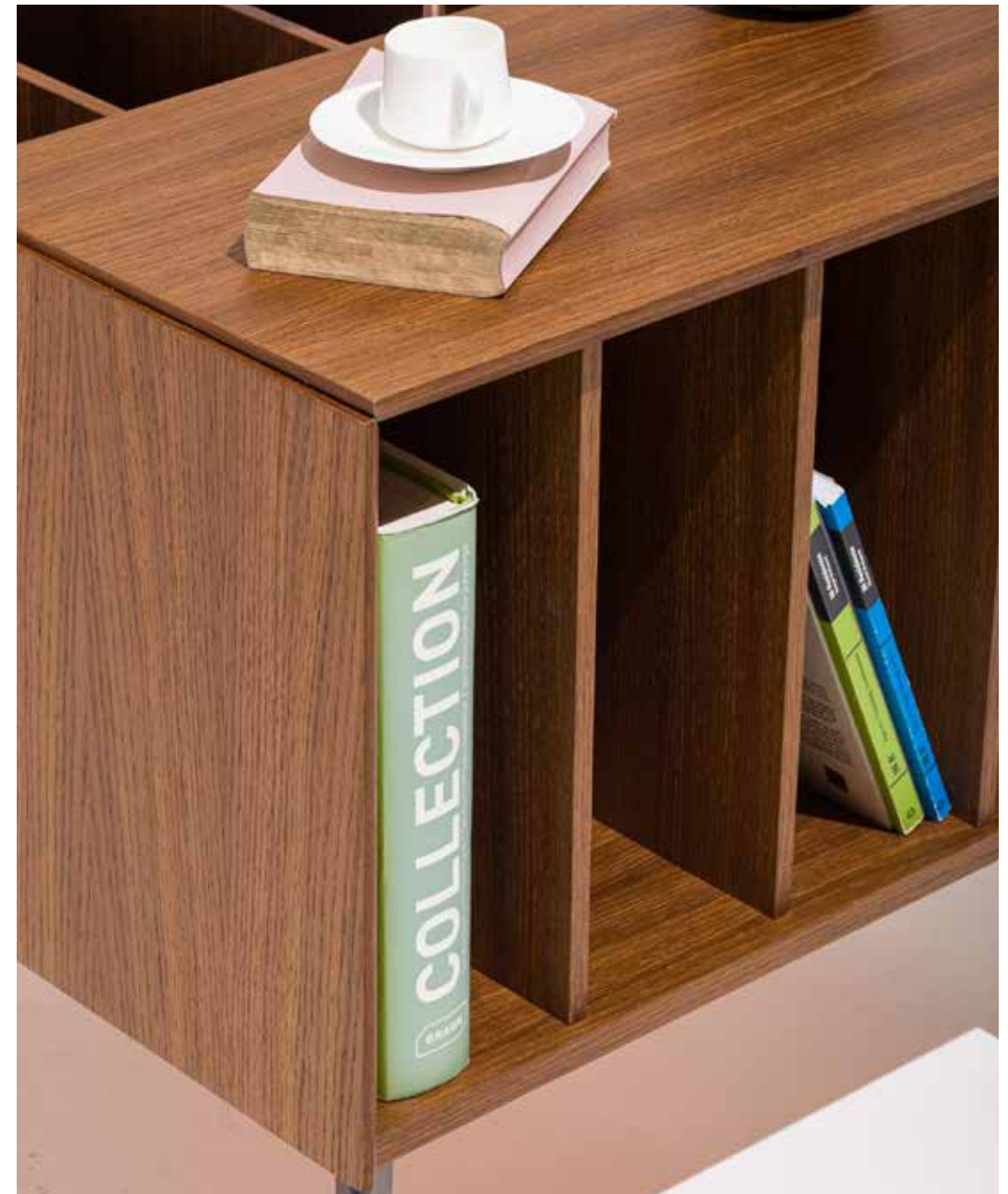
Self interlocking design for uniform placement.



Brings a higher perspective to every business.



A multipurpose eye-catching design for iconic workspaces.



An instant classic by Faruk Malhan.



Tola chair, f/p design
Rialto desk, Studio Kairos



For functional and aesthetic home office corners.



Allegro chair, Massimo Costaglia & Giulio Mazzanti
Calvino desk, Studio Kairos
Song pedestal, Koray Malhan



Soft edges, precision finishes and ultimate perfection.





Borges workstation, Studio Kairos
Path pedestal, Faruk Malhan
Sava chair, Faruk Malhan



A new workspace solution: Threshold

The Threshold collection features a range of desks and storage options specifically designed for use as workspaces.

The design process prioritized the use of sustainable materials, as well as factors such as lightness, ease of use, adaptability to changing needs, and ease of cleaning. The result is a set of innovative solutions that take into account evolving health, cleaning, and practical usage habits.

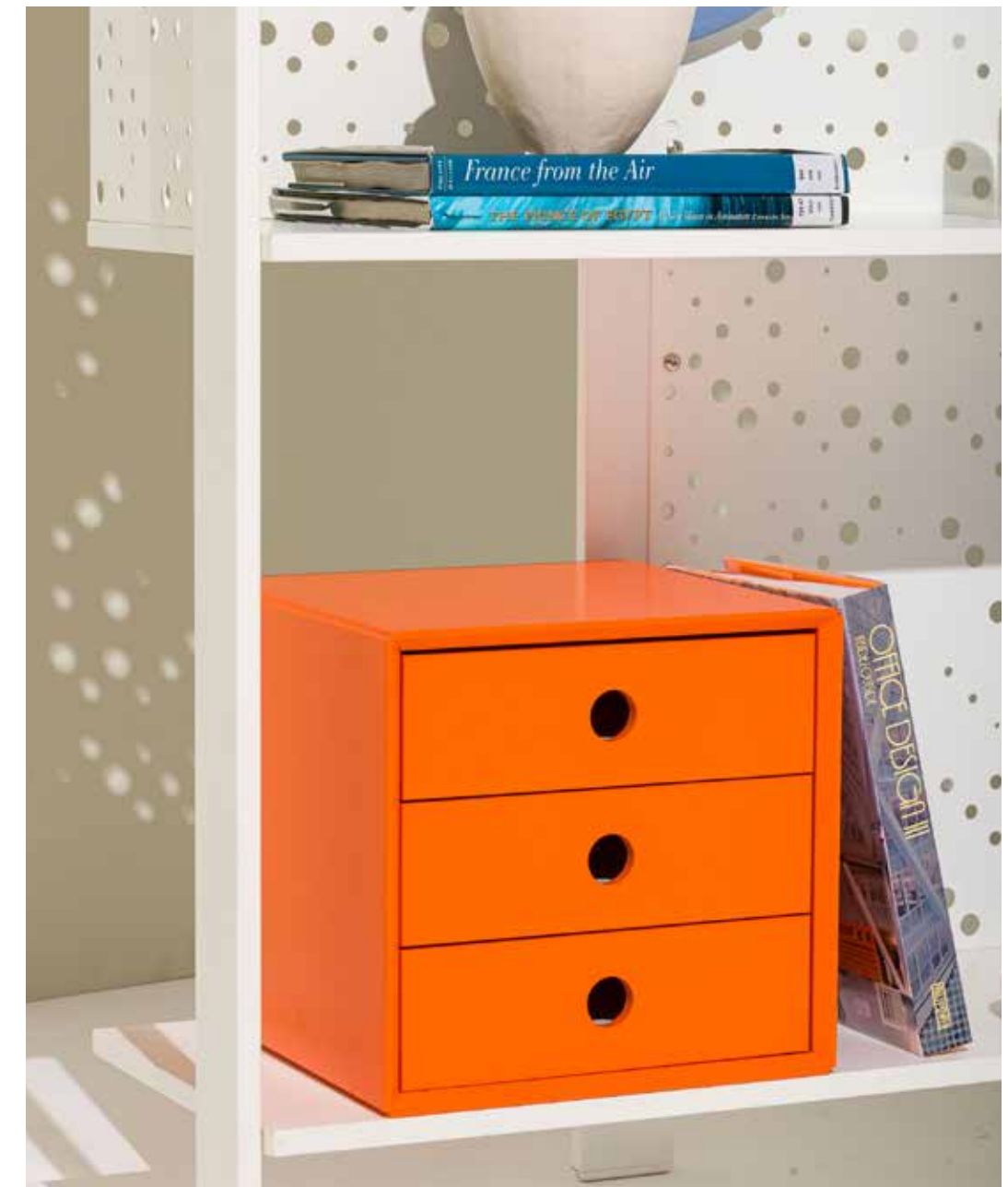


Threshold desk, Faruk Malhan & Koray Malhan
Clarus chair, Koleksiyon Design Studio



Threshold desk, Faruk Malhan & Koray Malhan
Threshold shelving system, Faruk Malhan & Koray Malhan
Alpsee chair, Andreas Krob
Stair Chair chair, Studio Kairos



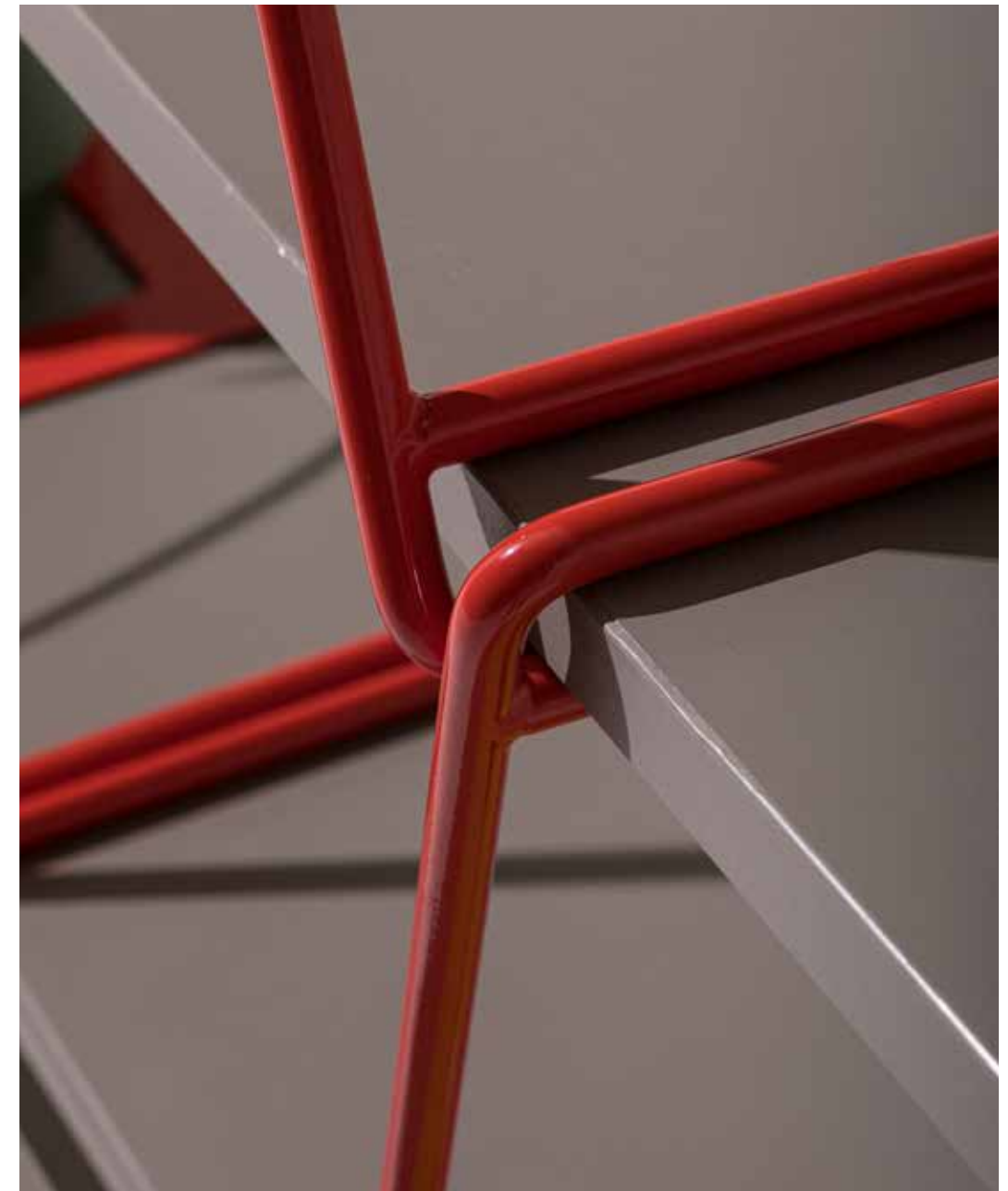


A design that exudes a fresh, youthful energy, perfect for infusing workspaces with a sense of vitality and liveliness.

A smart design for smart offices

Striking bookshelf that offers unmatched ease of transport and set-up with its smart design.





Unmatched excellence in every detail.





A clean and minimal look for essential storage units.



Mudita divider, Faruk Malhan & Koray Malhan
Hai meeting table, Faruk Malhan
Anatole high stool, Jean-Michel Wilmotte





Teamwall mobile assistants, Koray Malhan
Stair Chair chair, Studio Kairos



Teamwall mobile assistant, Koray Malhan
Partita co-working table, Faruk Malhan
Alpsee chair, Andreas Krob



A light storage and separation unit for open spaces.



Equipped with all the essential needs of modern life.



An iconic Koleksiyon masterpiece
for perfection in simplicity.



Elegant beauty in its most modest form.





A blended beauty of selected colors, materials and forms.



Koleksiyon İstanbul Headquarters

Cumhuriyet Mah. Hacı Osman Bayırı Cad. No: 25
34457 Sarıyer / İSTANBUL
Tel: +90 850 450 30 69
Fax: +90 212 223 48 25 / +90 212 299 17 45
info@koleksiyon.com.tr

International Sales

Cumhuriyet Mah. Hacı Osman Bayırı Cad. No: 25
34457 Sarıyer / İSTANBUL
Tel: +90 850 450 30 69
Fax: +90 212 223 48 25 / +90 212 299 17 45
internationalsales@koleksiyon.com.tr

Production Facilities

Barbaros Mah. Atatürk Bulvarı No: 137
59160 Süleymanpaşa / TEKİRDAĞ
Tel: +90 282 258 58 00
info@koleksiyon.com.tr

Product brochures



**Thanks to the photographers
we have worked with for Koleksiyon:**

Ayça Kobanbay
Cemal Emden
Gürkan Akay
Onur Kolkır
Saner Şen
Korhan Karaoyşal
Thomas Mayer
Marlene Delcambre
Mark Cocksedge
Kelvin Cuff
Rafael Gamo
Aslı Dayıoğlu
Erhan Kaya

